

7/16

CONNECTOR SERIES

INTERFACE MATING DIMENSIONS

SPECIFICATIONS

CONTENT:

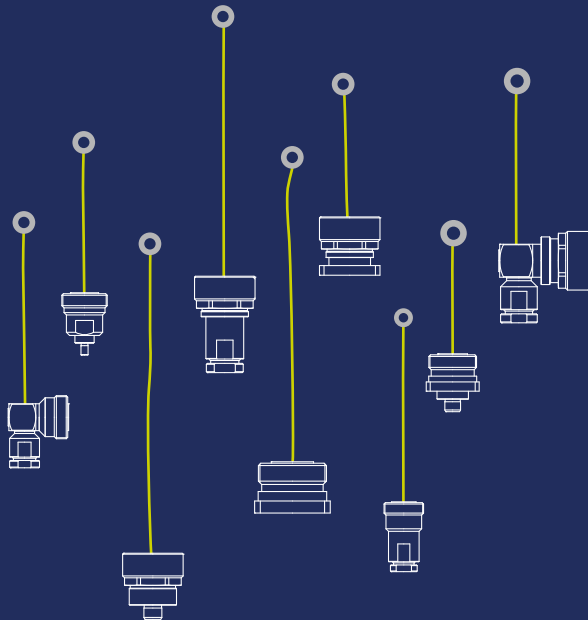
- R/A Clamp Plug
- R/A Clamp Jack
- Crimp Plug
- Crimp Jack
- Panel Jack
- Panel Plug
- Panel Jack
- Clamp Plug
- Clamp Jack

Bridging Gaps



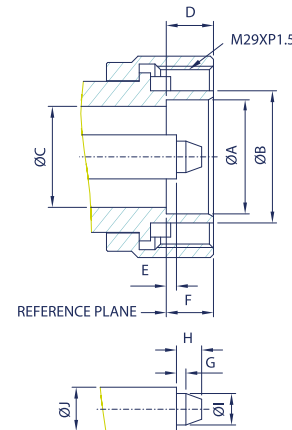
7/16 series

The 7/16 series connectors are applied to communication systems with high power. With the design of 50 Ohm impedance and remarkable performance up to 7.5 GHz, 7/16 connectors can be applied with the transmission of power and has low loss in signal transmission. These connectors are used widely in applications such as transmitting stations and cell phone base stations. Frontlynk's 7/16 connectors can fit your application perfectly: we've further passed PIM and high power tests to ensure consistent high levels of quality.

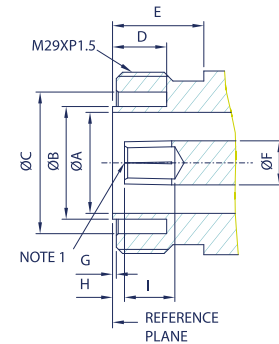


INTERFACE MATING DIMENSIONS

PLUG /



JACK /



PLUG		
Letter	Millimeters	
	Minimum	Maximum
A	18.03	18.21
B	20.60	21.40
C	15.85	16.25
D	7.00	8.00
E	1.47	1.77
F	7.00	9.00
G	1.40	1.60
H	-	4.50
J	4.96	5.04
K	6.97	7.03

JACK		
Letter	Millimeters	
	Minimum	Maximum
A	15.85	16.25
B	-	18.00
C	22.10	22.90
D	8.10	-
E	10.00	-
F	6.94	7.03
G	0.50	0.70
H	1.77	2.07
I	5.00	-

NOTE 1: I.D. TO MEET VSWR AND CONTACT RESISTANCE WHEN MATED WITH 4.96 / 5.04 MM DIA. PIN.

SPECIFICATIONS

Electrical /

Impedance		50 Ohm
Frequency Range		0 - 7.5 GHz
Working Voltage		2500 VRMS Max.
Dielectric Withstanding Voltage		ANDREW 1/4" CABLE: 3000 VRMS Max. LMR-400 CABLE: 4000 VRMS Max.
VSWR	Straight	1.3 Max.
	Right Angle	1.5 Max.
Contact Resistance	Center Contact	0.4 Milliohms Max.
	Outer Contact	1.5 Milliohms Max.
Insulator Resistance		10000 Megohms Min.

Material /

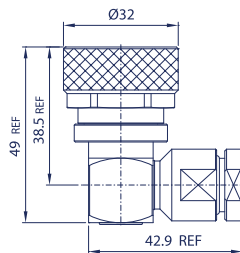
Parts Name	Material	Finish
Body, Metal Parts	Plug: Brass per QQ-B-626	Albaloy
Center Contacts	Plug: Brass per QQ-B-626	Silver
	Jack: Beryllium copper per QQ-C-530	Silver
Insulators	Teflon	None
Crimp Ferrules	Annealed Brass	Albaloy
Clamp Gaskets	Silicone Rubber	None

NOTE: Other Material / Finish is Available on Request.

Mechanical & Environmental /

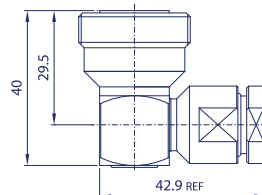
Coupling Nut Retention	225 lbs. Min.
Coupling Proof Torque	310 in- lbs. Min.
Contact Retention	45 lbs. Min.
Durability (Mating)	500 cycles Min. (For beryllium copper female contact only)

7/16 series



R/A CLAMP PLUG

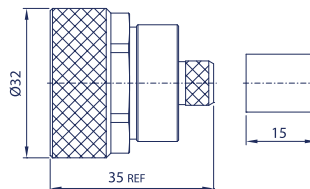
Model No.	Cable Group	Impedance
FL90P4-NR5	ANDREW 1/4"	50



R/A CLAMP JACK

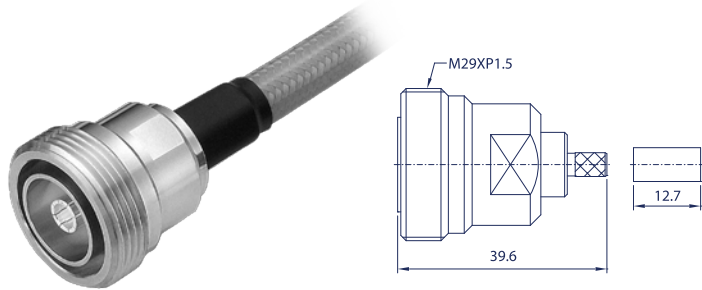
Model No.	Cable Group	Impedance
FL90J4-NR5	ANDREW 1/4"	50

04



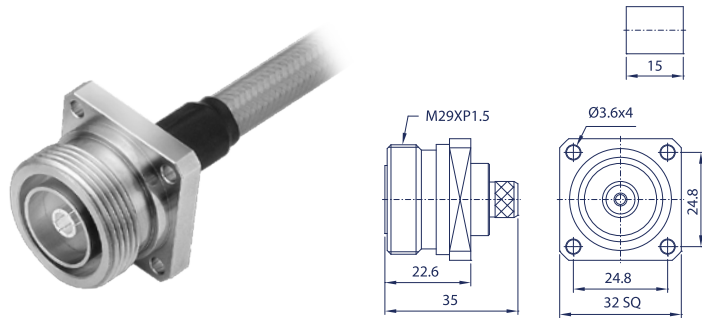
CRIMP PLUG

Model No.	Cable Group	Impedance
FL90P1-NS5	LMR-400, B7810A, B8214	50



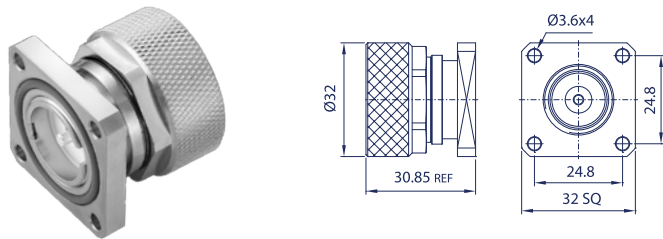
CRIMP JACK

Model No.	Cable Group	Impedance
FL90J1-NS5	LMR-200, B7807A LMR-400, B7810A, B8214	50



PANEL CRIMP JACK

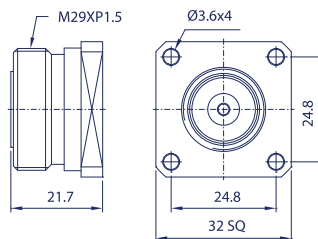
Model No.	Cable Group	Impedance
FL90J1-HS5	LMR-200, B7807A LMR-400, B7810A, B8214	50



PANEL PLUG

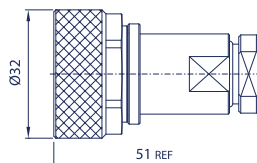
Model No.	Cable Group	Impedance
FL90P9-HS500	N/A	50

7/16 series



PANEL JACK

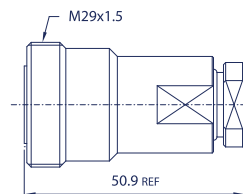
Model No.	Cable Group	Impedance
FL90J9-HS500	N/A	50



CLAMP PLUG

Model No.	Cable Group	Impedance
FL90P4-NS5	ANDREW 1/4" KUWES 1/2"	50

06



CLAMP JACK

Model No.	Cable Group	Impedance
FL90J4-NS5	ANDREW 1/4"	50